

LMSPharma is designed to collect, analyze, and display data for all phases of pharmaceutical operations with alarming, notification, viewing, reporting, and auditing.



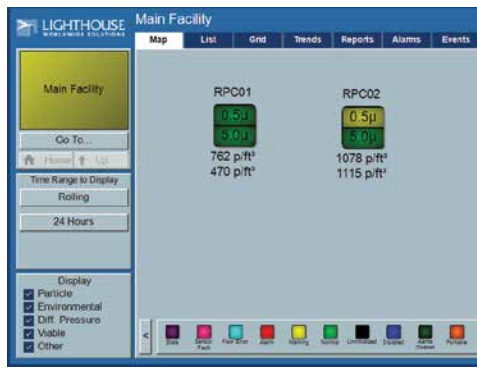
LMS Pharma provides highly reliable and secure facility monitoring with system redundancy and robust security. The easy-to-use interface allows for customized viewing of real-time and historical data via maps, trend charts, data tables, and fully customizable Conformance reports, while also giving exceptionally fast visual notification of problems so that monitoring tasks and alarm acknowledgements can be accomplished quickly and easily.

Redundant data acquisition systems take over control seamlessly should the primary fail. This “failover” feature provides uninterrupted operation and reliable data collection even in the most critical situations.

Support for a wide range of industry standard platforms and protocols enables seamless integration with existing equipment, control systems, and IT environments, all while maintaining 21 CFR Part 11, EU GMP, and GAMP 5 compliance.

Features

- Real-time and historical data collection
- Simple Differential/Summation/Normalized
- Real-time maps, graphs, data tables, data status
- Alarm outputs to light beacons
- Alarm-logging, acknowledgement, and delays
- 21 CFR, EU GMP, and GAMP 5 compliant
- Output Real-Time data via OPC DA server
- OPC UA Server/Client
- LDAP Directory Services Authentication / Active Directory Groups 2 year warranty
- Easy to Use User Interface
- Direct-action Real Time Data Views
- Virtual Machine Installation Option
- Email and SMS Alarm Notifications
- Customizable Automatic Report Exports
- Comprehensive Backup and Failover
- Optional Networked Webclient Access
- Buffering of Environmental sensors Designed for reliability



The multi-level Maps provide an overview for the whole facility at once, with highly customizable Unit objects that allow a 1 click "drill-down" to view details. All items on the Map are active, providing access to data viewing, analysis, and alarm management.



Instrument data is easily viewable and graphable, with all data recorded able to be output into standard reports.



Temperature



O2 levels



Real-time particle counting



Relative humidity



CO2 levels



Vacuum Pressure



Differential pressure



Viable samplers



Door status

Features LMSPharma

Data Collection	Real-time data collection
Graphs	Real-time and historical display of graphs
Data Tables	Real-time and historical display of data tables
Data Status	Real-time display of data status
Maps	Real-time display of maps
Alarm Output	Through digital outputs to alarm light beacons
Alarm Logging	Alarm acknowledgement and alarm log
Output Real-Time Data	via Modbus or POC DA or UA server
Virtual Machine Distribution	Integrates into existing VM architectures
Integrated Industry Standards	OPC DA, OPC HDA, OPC A&E, OPC UA, ODBC SQL, Modbus, Simatic S7 and others
Scheduled Reports	Automatic generation, highly customizable
Selectable Cleanroom Status	On-Screen controls can change cleanroom status
Automatic Controls	Pump activations and cycling, cleanroom status changes
Optional	Printed operating manual

Distributed by:



Scan to Learn More

